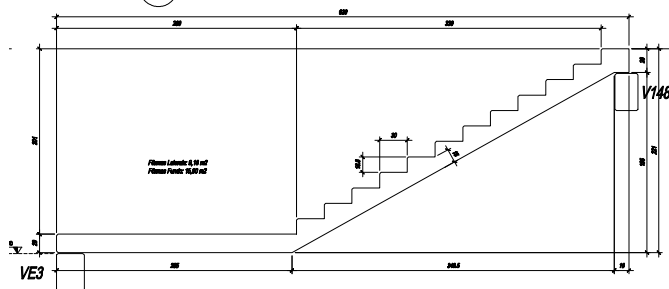
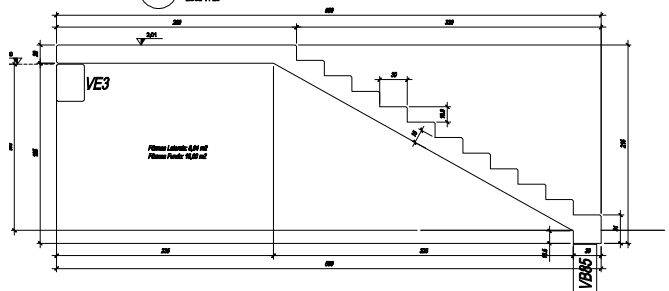


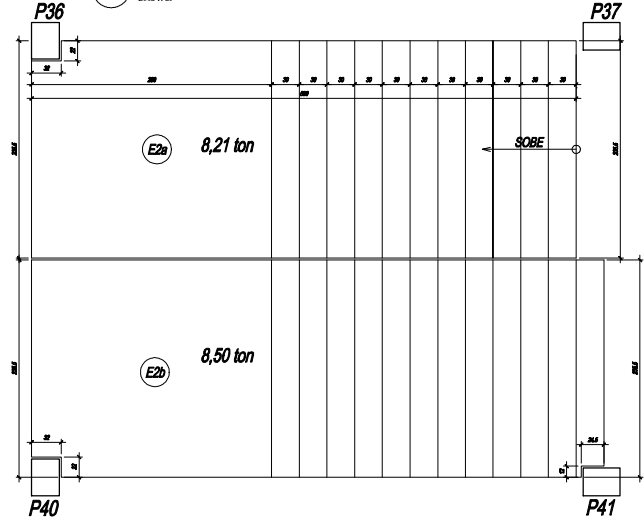
**E2b** VISTA LATERAL  
ESC.: 1/25



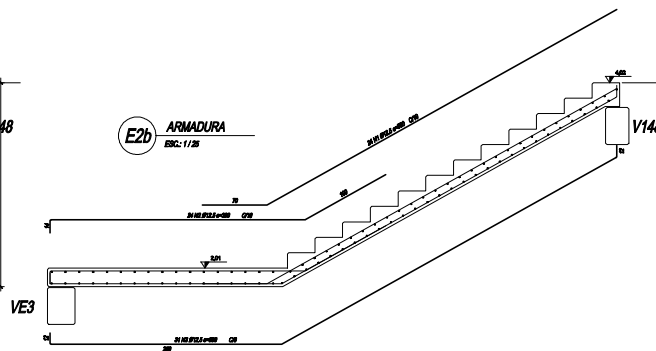
**E2a** VISTA LATERAL  
ESC.: 1/25



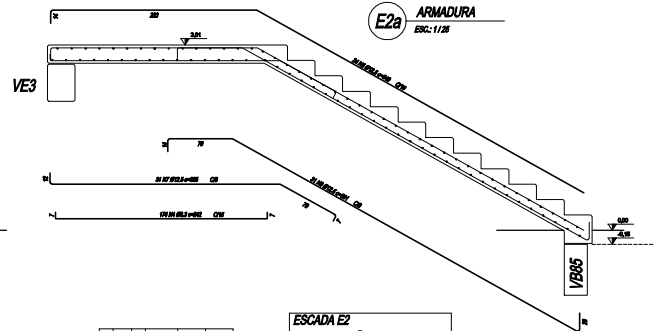
**E2** PLANTA  
ESC.: 1/25



**E2b** ARMADURA  
ESC.: 1/25



**E2a** ARMADURA  
ESC.: 1/25



POS.	REF.	Quant.	Unid.	Valor	Valor
01	1.000	1	m	1,000	1,000
02	1.000	1	m	1,000	1,000
03	1.000	1	m	1,000	1,000
04	1.000	1	m	1,000	1,000
05	1.000	1	m	1,000	1,000
06	1.000	1	m	1,000	1,000
07	1.000	1	m	1,000	1,000
08	1.000	1	m	1,000	1,000
09	1.000	1	m	1,000	1,000
10	1.000	1	m	1,000	1,000
11	1.000	1	m	1,000	1,000
12	1.000	1	m	1,000	1,000
13	1.000	1	m	1,000	1,000
14	1.000	1	m	1,000	1,000
15	1.000	1	m	1,000	1,000
16	1.000	1	m	1,000	1,000
17	1.000	1	m	1,000	1,000
18	1.000	1	m	1,000	1,000
19	1.000	1	m	1,000	1,000
20	1.000	1	m	1,000	1,000
21	1.000	1	m	1,000	1,000
22	1.000	1	m	1,000	1,000
23	1.000	1	m	1,000	1,000
24	1.000	1	m	1,000	1,000
25	1.000	1	m	1,000	1,000
26	1.000	1	m	1,000	1,000
27	1.000	1	m	1,000	1,000
28	1.000	1	m	1,000	1,000
29	1.000	1	m	1,000	1,000
30	1.000	1	m	1,000	1,000
31	1.000	1	m	1,000	1,000
32	1.000	1	m	1,000	1,000
33	1.000	1	m	1,000	1,000
34	1.000	1	m	1,000	1,000
35	1.000	1	m	1,000	1,000
36	1.000	1	m	1,000	1,000
37	1.000	1	m	1,000	1,000
38	1.000	1	m	1,000	1,000
39	1.000	1	m	1,000	1,000
40	1.000	1	m	1,000	1,000
41	1.000	1	m	1,000	1,000
42	1.000	1	m	1,000	1,000
43	1.000	1	m	1,000	1,000
44	1.000	1	m	1,000	1,000
45	1.000	1	m	1,000	1,000
46	1.000	1	m	1,000	1,000
47	1.000	1	m	1,000	1,000
48	1.000	1	m	1,000	1,000
49	1.000	1	m	1,000	1,000
50	1.000	1	m	1,000	1,000
51	1.000	1	m	1,000	1,000
52	1.000	1	m	1,000	1,000
53	1.000	1	m	1,000	1,000
54	1.000	1	m	1,000	1,000
55	1.000	1	m	1,000	1,000
56	1.000	1	m	1,000	1,000
57	1.000	1	m	1,000	1,000
58	1.000	1	m	1,000	1,000
59	1.000	1	m	1,000	1,000
60	1.000	1	m	1,000	1,000
61	1.000	1	m	1,000	1,000
62	1.000	1	m	1,000	1,000
63	1.000	1	m	1,000	1,000
64	1.000	1	m	1,000	1,000
65	1.000	1	m	1,000	1,000
66	1.000	1	m	1,000	1,000
67	1.000	1	m	1,000	1,000
68	1.000	1	m	1,000	1,000
69	1.000	1	m	1,000	1,000
70	1.000	1	m	1,000	1,000
71	1.000	1	m	1,000	1,000
72	1.000	1	m	1,000	1,000
73	1.000	1	m	1,000	1,000
74	1.000	1	m	1,000	1,000
75	1.000	1	m	1,000	1,000
76	1.000	1	m	1,000	1,000
77	1.000	1	m	1,000	1,000
78	1.000	1	m	1,000	1,000
79	1.000	1	m	1,000	1,000
80	1.000	1	m	1,000	1,000
81	1.000	1	m	1,000	1,000
82	1.000	1	m	1,000	1,000
83	1.000	1	m	1,000	1,000
84	1.000	1	m	1,000	1,000
85	1.000	1	m	1,000	1,000
86	1.000	1	m	1,000	1,000
87	1.000	1	m	1,000	1,000
88	1.000	1	m	1,000	1,000
89	1.000	1	m	1,000	1,000
90	1.000	1	m	1,000	1,000
91	1.000	1	m	1,000	1,000
92	1.000	1	m	1,000	1,000
93	1.000	1	m	1,000	1,000
94	1.000	1	m	1,000	1,000
95	1.000	1	m	1,000	1,000
96	1.000	1	m	1,000	1,000
97	1.000	1	m	1,000	1,000
98	1.000	1	m	1,000	1,000
99	1.000	1	m	1,000	1,000
100	1.000	1	m	1,000	1,000

Apq: CA-60 (RSL-21 kg)  
Concreto: C20, em geral (RSL-21 kg)  
Tela: 100, 10 mm

ESCALA E2  
DET. ARMADURA  
Concreto: C40, em geral  
Apo das barras: CA-50 e CA-60  
Apo dos estribos: CA-50 e CA-60  
Escala: 1:25

VIDE NOTA FOLHA 02

PROJETO DE PROPRIEDADE INTELECTUAL DO Eng.º MÁRCIO SULZBACH, COM DIREITOS RESERVADOS E REGISTRADOS NO CONFER  
SUB-IP SEM PROIBIÇÃO À UTILIZAÇÃO TOTAL OU PARCIAL, SEM AUTORIZAÇÃO DO AUTOR.

REVISÃO	DATA	DESCRIÇÃO	APROVAÇÃO
01	20/02/20	REVISÃO	
02			
03			
04			
05			
06			
07			
08			
09			
10			
11			
12			
13			
14			
15			
16			
17			
18			
19			
20			
21			
22			
23			
24			
25			
26			
27			
28			
29			
30			
31			
32			
33			
34			
35			
36			
37			
38			
39			
40			
41			
42			
43			
44			
45			
46			
47			
48			
49			
50			
51			
52			
53			
54			
55			
56			
57			
58			
59			
60			
61			
62			
63			
64			
65			
66			
67			
68			
69			
70			
71			
72			
73			
74			
75			
76			
77			
78			
79			
80			
81			
82			
83			
84			
85			
86			
87			
88			
89			
90			
91			
92			
93			
94			
95			
96			
97			
98			
99			
100			

PROJETO	DESCRIÇÃO	INDICAÇÃO
ESTRUTURA	EFETI - PEDRO DE ALCANTARA	
MÁRCIO	URBAM - URBANIZADORA MUNICIPAL	
M023		
ESTRUTURAS - CONCRETO ARMADO / PRÉ-MOLDADO		
DET. ARMADURA - ESCADA E2		
		S12